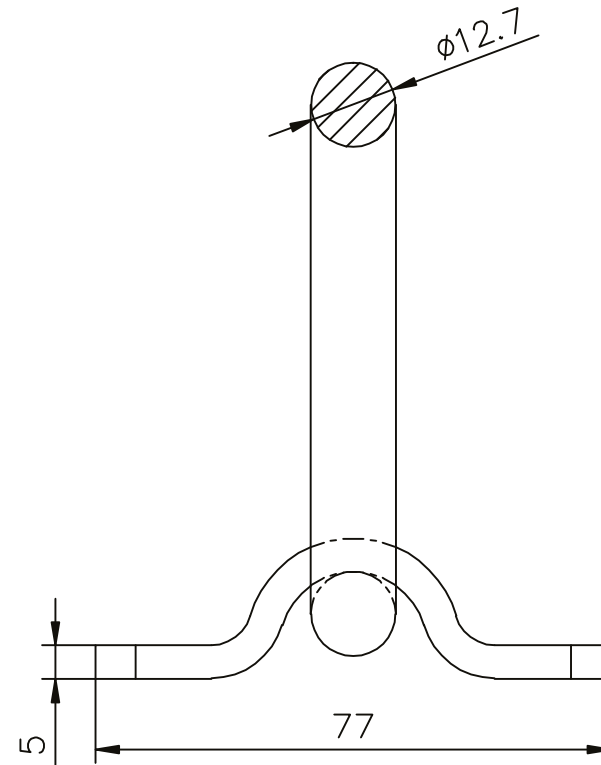
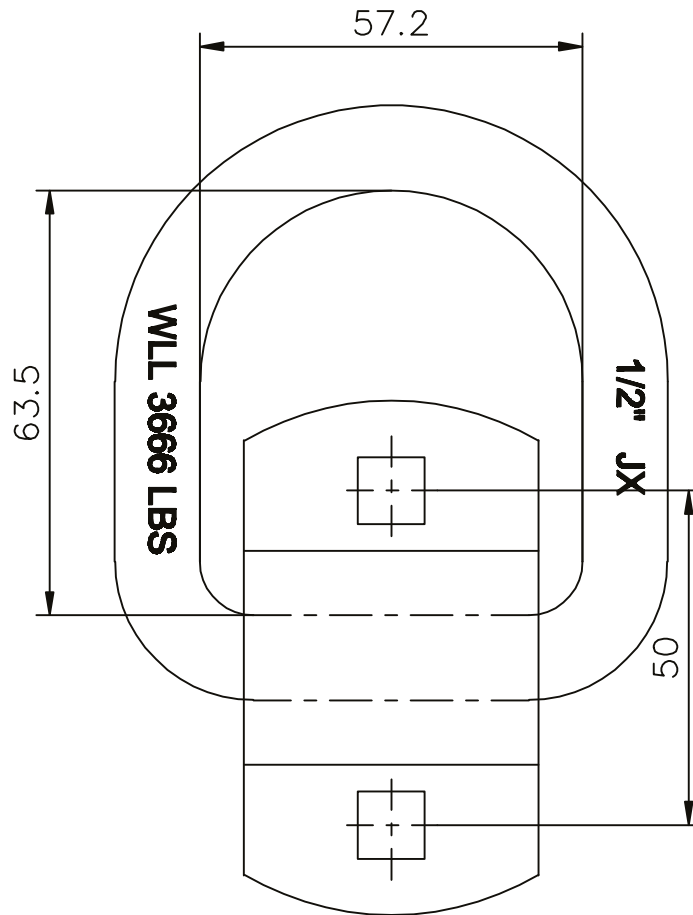


TECHNICAL DRAWING / DESSIN TECHNIQUE



JIMEXS
HARDWARE

1 866 447-5656 / INFO@JIMEXS.COM

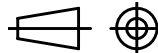
WWW.JIMEXS-HARDWARE.COM

410-201

Anneau d'arrimage en D, Montage de surface
 Lashing D-ring, Surface mounting

2022-01-27

PROJECTIONS



DIMENSIONS

3-3/8" x 3-1/2", holes / trous 13/32"

MATERIAL / MATÉRIEL Acier forgé plaqué zinc / Forged steel zinc plated

SPECS

WLL : 3666 lb, BS : 11000 lb